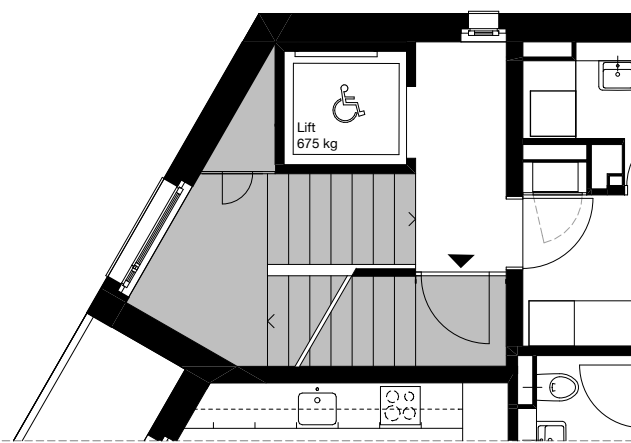
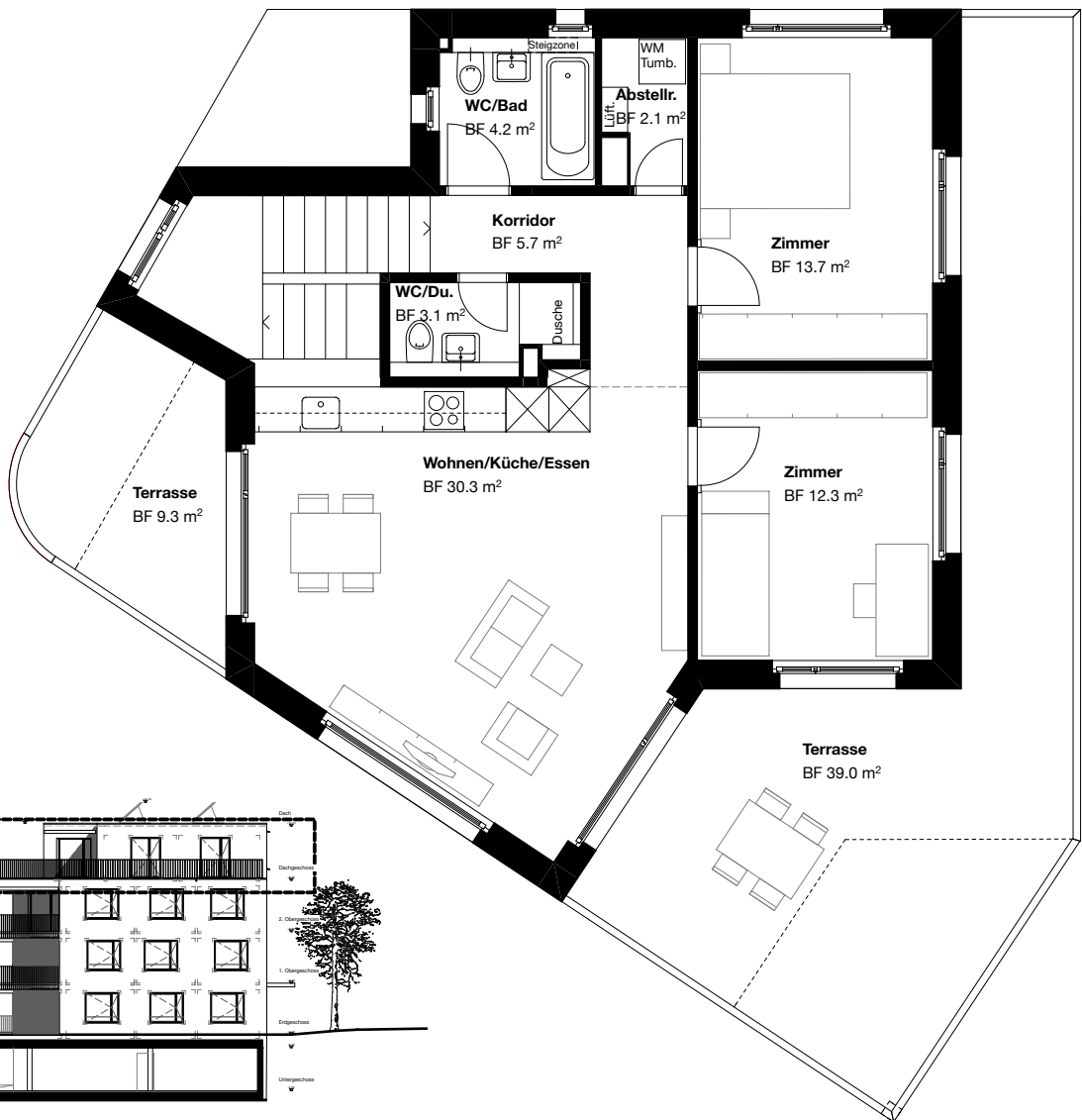


2. OG / Attika

Eingang und Treppe_10.3 m²



Netto, exkl. Innenwände_71.4 m²
Brutto, inkl. Innenwände_74.0 m²



Gossauerstrasse 1
3.5-Zimmerwohnung 2. OG / Attika

Mst.: 1:100

Netto, exkl. Innenw. _71.4 m² + 10.3 m² = 81.7 m²
Brutto, inkl. Innenw. _74.0 m² + 10.3 m² = 84.3 m²

5 0

5m

